

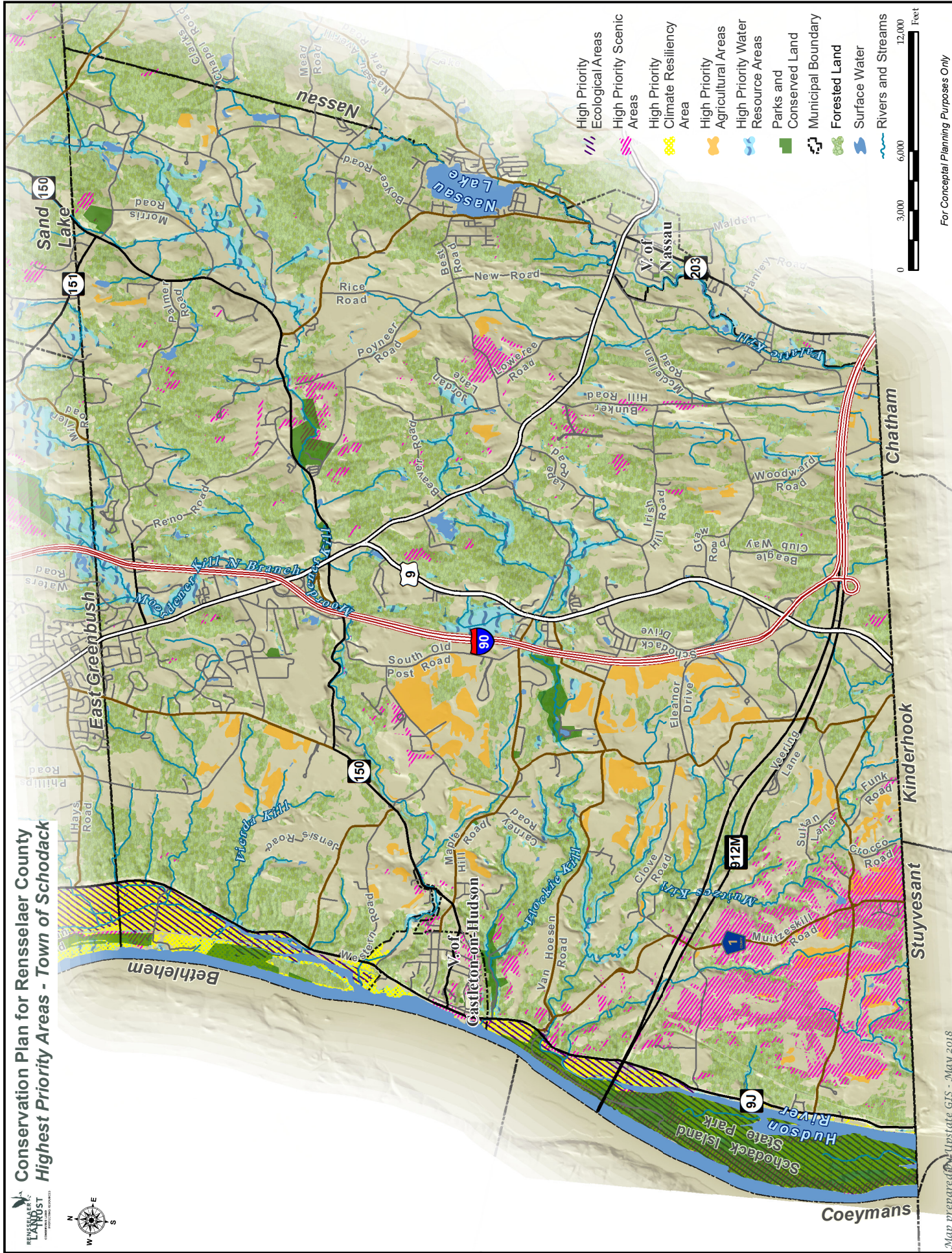
**Appendix T:****Town of Schodack Resource Targets and Conservation Priority Areas**

The Town of Schodack is the on the southwestern corner of the county with high priority ecological areas along the Hudson, including large high priority climate resiliency areas that allow the migration of tidal wetlands as river level rises. Schodack Island State Park is the largest public land, while Schodack Town Park and its vicinity is a high priority scenic area. The southwestern corner of the town contains an expanse of high priority scenic and agricultural areas. High priority agricultural areas are also located in patches west of Interstate 90, which runs north-south through the town. There are several high priority water resource areas along the Moordener Kill North Branch, the Moordener Kill, the Vlockie Kill, and the Valatie Kill.

<b>Resource Target</b>	<b>Conservation Priority Area</b>
Water	Wellheads in Castleton-on-Hudson
Water	Wellheads near Rte 23
Water	Vlockie Kill corridor and areas between I-90 and Rte 9
Water	Moordener Kill corridor west of Burden Lake Road
Water	North Branch Moordener Kill west of I-90 and east of Rte 20
Water	Areas between Rte 9J and Hudson River along Papscanee Creek
Water	Along Schodack Creek (Schodack Island State Park)
Ecological	Hudson River shoreline, tidal areas, and ravines
Climate Resiliency	Hudson River tidal wetlands and floodplains, and along Papscanee Creek and Schodack Creek
Agricultural and Scenic	Area around Schodack Landing Road and Muitzeskill Road
Agricultural	East of I-90 around Van Hosen, Clove, Brookview Station, and Brookview Roads
Agricultural	Area between Rte 9J and Hudson River along Papscanee Creek north of Staats Island Road
Scenic	Schodack Town Park, and vicinity along Moordener Kill
Scenic	Schodack Island State Park
Scenic	Reickert Hill
Composite	Hudson River tidal wetland and floodplains, and along Papscanee Creek and Schodack Creek
Composite	Schodack Town Park, and along Moordener Kill
Composite	Area around Schodack Landing Road and Muitzeskill Road



# Conservation Plan for Rensselaer County Highest Priority Areas - Town of Schodack



- High Priority Ecological Areas
- High Priority Scenic Areas
- High Priority Climate Resiliency Area
- High Priority Agricultural Areas
- High Priority Water Resource Areas
- Parks and Conserved Land
- Municipal Boundary
- Forested Land
- Surface Water
- Rivers and Streams

