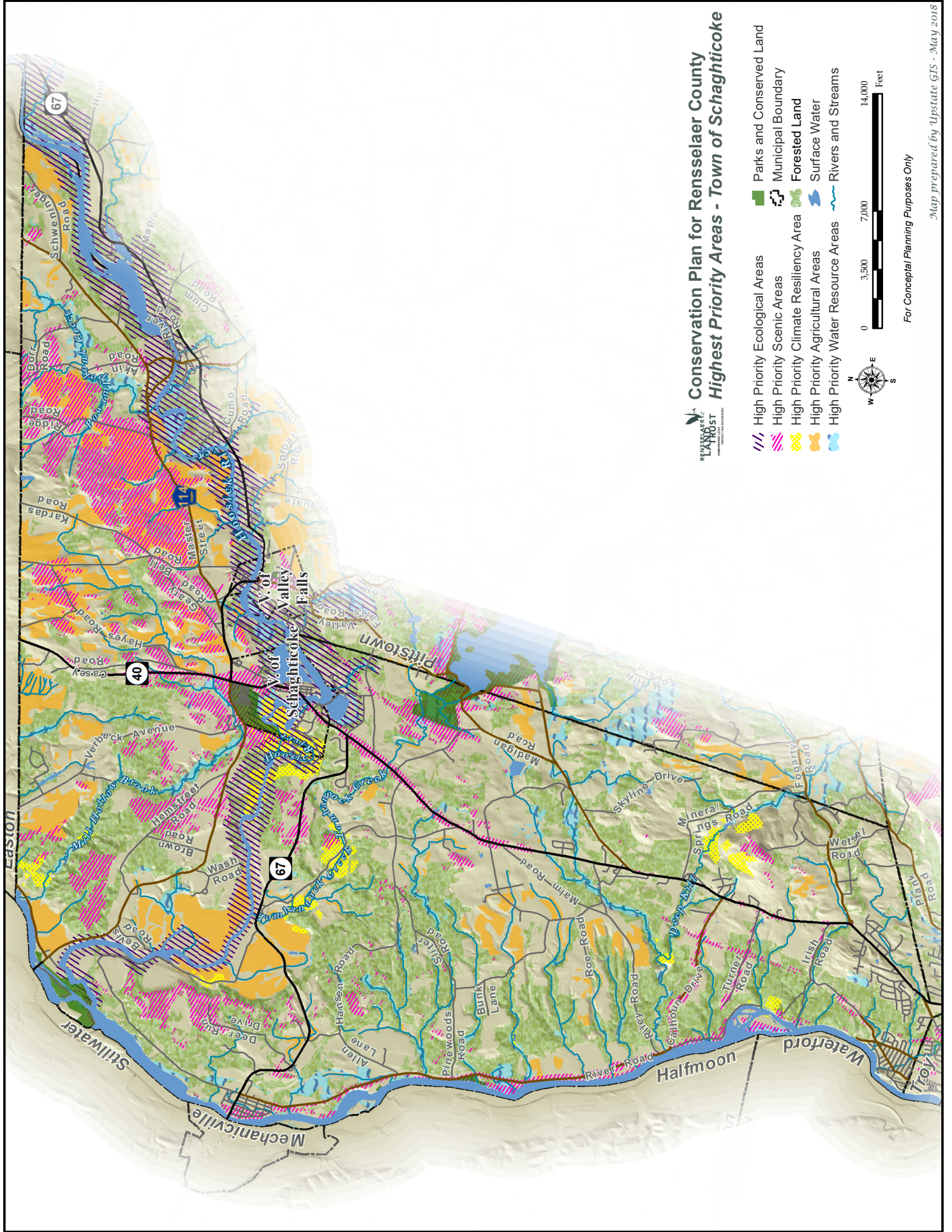


Appendix S:

Town of Schaghticoke Resource Targets and Conservation Priority Areas

The Town of Schaghticoke is on the northwest corner of Rensselaer County with the confluence of the Hoosic River and the Hudson near the northwest corner of the town. The town contains large areas of high priority agricultural areas, mostly in the northern part of town, but scattered throughout. High priority scenic areas are also found, again in the northern part of town (visible from viewpoints on the Rensselaer Plateau) and otherwise scattered throughout. Portions of NYS 40 and several county roads have scenic areas along them. There are scattered areas of high priority climate resiliency areas along the Hoosic and along Tomhannock Creek, Mill Hollow Brook and the Deep Kill, all of which also represent high priority water resource areas. The Hoosic River corridor contains both high priority ecological areas and high priority water resources, and represents a corridor for the passage of wildlife between the Hudson River and both the Taconics and Green Mountains. Other areas with ecological significance include forests on Rice Mountain and along the Deep Kill, woods growing on sandplain soils, and the county's only clayplain forest.

Resource Target	Conservation Priority Area
Water	Wampecack Creek corridor
Water	Mill Hollow Brook corridor downstream of Village
Water (and Climate Resiliency)	Deep Kill west of Mineral Springs Road
Water	Area north of Melrose Valley Falls Road, and area between Main Road and Rte 40
Water	Area around wellhead in Village of Schaghticoke
Ecological	Hoosic River corridor
Ecological (and Scenic)	Hudson River shore, bluffs, and ravines
Climate Resiliency	Deep Kill corridor
Climate Resiliency	Hoosic River corridor downstream of Village
Climate Resiliency	Portions of Tomhannock Creek corridor downstream of Rte 40
Climate Resiliency	Area along Knickerbocker Road
Climate Resiliency	Mill Hollow Brook corridor downstream of Stillwater Bridge Road
Agricultural	Hoosic River corridor and north
Agricultural	Area around Pine Woods Road
Scenic	Rte 40
Scenic	Old rail corridor northwest of Madigan Road
Scenic	Hills west of Wampecack Creek
Composite	Hoosic River corridor
Composite	Hudson River shore, bluffs, and ravines
Composite	Deep Kill corridor
Composite	Mill Hollow Brook corridor
Composite	Old rail corridor from Rte 40 to Hoosic River



For Conceptual Planning Purposes Only