

Appendix R:

Town of Sand Lake Resource Targets and Conservation Priority Areas

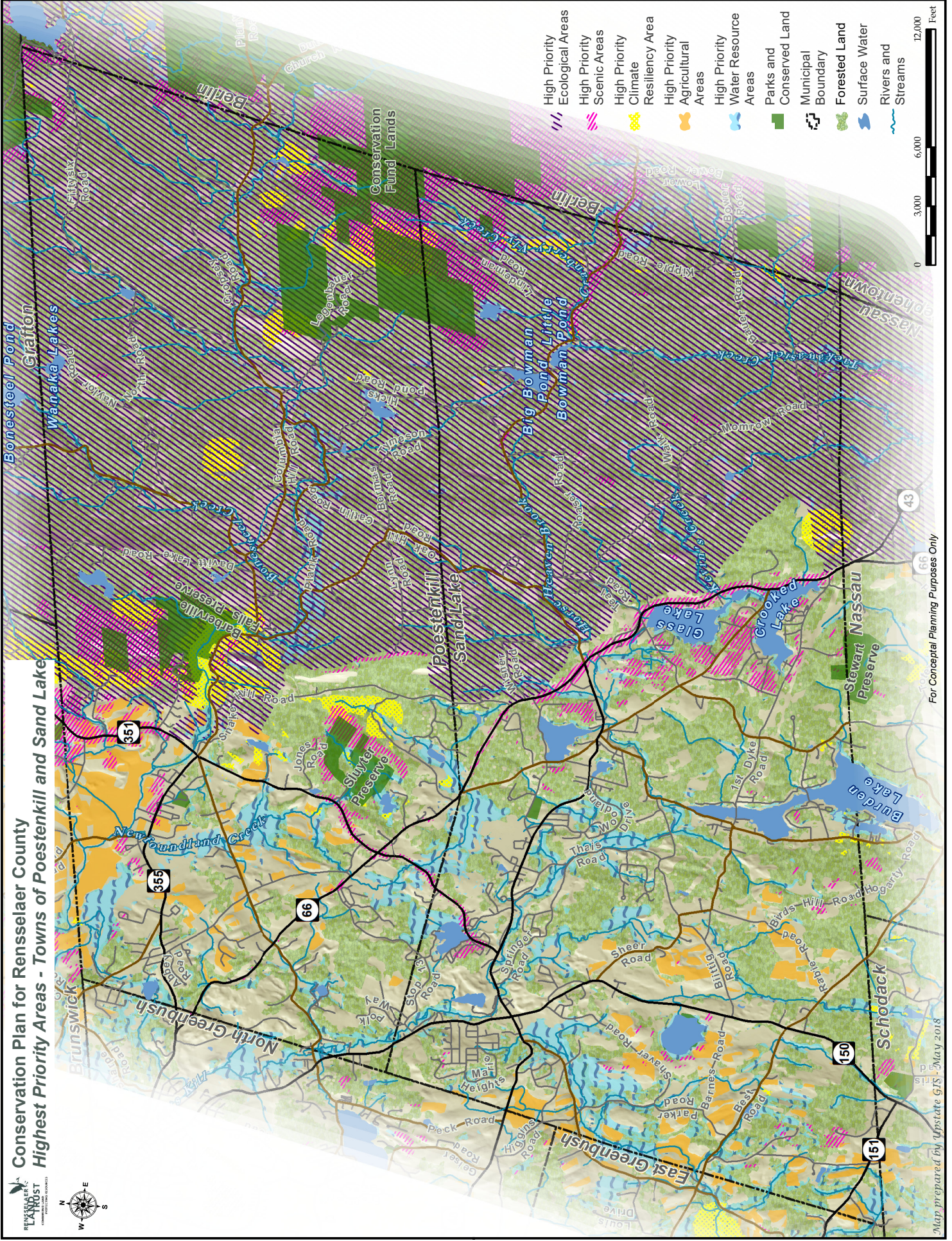
Sand Lake contains high priority ecological areas, climate resiliency areas, and scenic areas on the Rensselaer Plateau on the town's eastern side. There are many high priority water resource areas in that area as well, representing wetlands along the Moordener Kill North Branch, Moordener Kill, and Wynants Kill. Sand Lake is largely forested, with higher priority agricultural areas area scattered in the western part of the town at lower elevations. Big Bowman Pond, Little Bowman Pond, Crystal Lake, Glass Lake, Crooked Lake, and Burden Lake are major water bodies and scenic areas. NYS 66 along the lakes, NYS 351, and Taborton Road east of Taborton are scenic roads.

Resource Target	Conservation Priority Area
Water	Wetlands and streams east of Rte 351 and west of Old Rte 66, south of Poestenkill town line
Water	Wynants Kill corridor south of Rte 43 to Garner Road, and along Rte 150
Water	North Branch Moordener Kill along Old Best Road
Water	Moordener Kill corridor
Ecological	Rensselaer Plateau
Climate Resiliency	Bailey Mountain (highest score in Sand Lake)
Climate Resiliency	Cranberry Vly (highest score in Sand Lake)
Agricultural	Area south of Rte 43 at North Greenbush town line (highest score in Sand Lake)
Scenic	Rensselaer Plateau around Cranberry Vly Creek
Scenic	Hill north of Taborton
Composite	Area from Rte 150 to East Greenbush town line and from Rte 43 south to Schodack town line, including North Branch of Moordener Kill corridor
Composite	Rensselaer Plateau, especially area around Cranberry Vly Creek; and hill southwest of Taborton, hill north of Taborton, and The Gipfel; and Bailey Mountain

Conservation Plan for Rensselaer County Highest Priority Areas - Towns of Poestenkill and Sand Lake



- High Priority Ecological Areas
- High Priority Scenic Areas
- High Priority Climate Resiliency Area
- High Priority Agricultural Areas
- High Priority Water Resource Areas
- Parks and Conserved Land
- Municipal Boundary
- Forested Land
- Surface Water
- Rivers and Streams



For Conceptual Planning Purposes Only

Map prepared by Update GIS, May 2018