

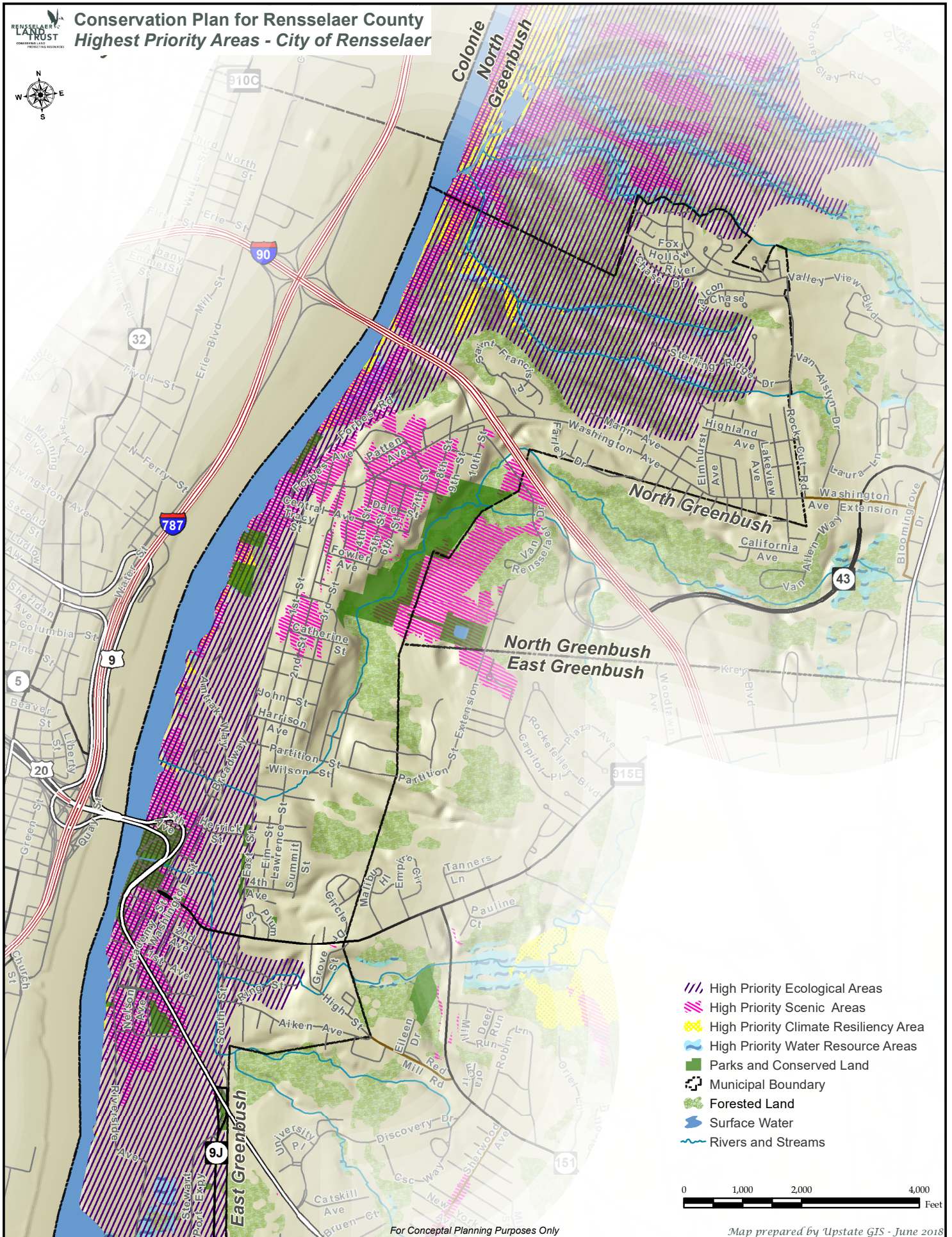
Appendix Q:

City of Rensselaer Resource Targets and Conservation Priority Areas

The City of Rensselaer contains high priority ecological areas along the Hudson River and along streams and ravines in the northern part of the city that flow into the Hudson. The unnamed streams flow through the largest forested area within the City. The Hudson River shoreline also has high priority scenic areas and climate resiliency areas. The City of Rensselaer's public lands include Riverfront Park and a large area along the border with North Greenbush.

Resource Target	Conservation Priority Area
Water	None
Ecological	Hudson River shore and floodplain and connected ravines and woods (highest score in Rensselaer)
Climate Resiliency	Hudson River shore and floodplain
Agricultural	None
Scenic	Hudson River shoreline
Composite	Hudson River shoreline
Agricultural	Hoosic River corridor

Conservation Plan for Rensselaer County Highest Priority Areas - City of Rensselaer



For Conceptual Planning Purposes Only

Map prepared by Upstate GIS - June 2018