

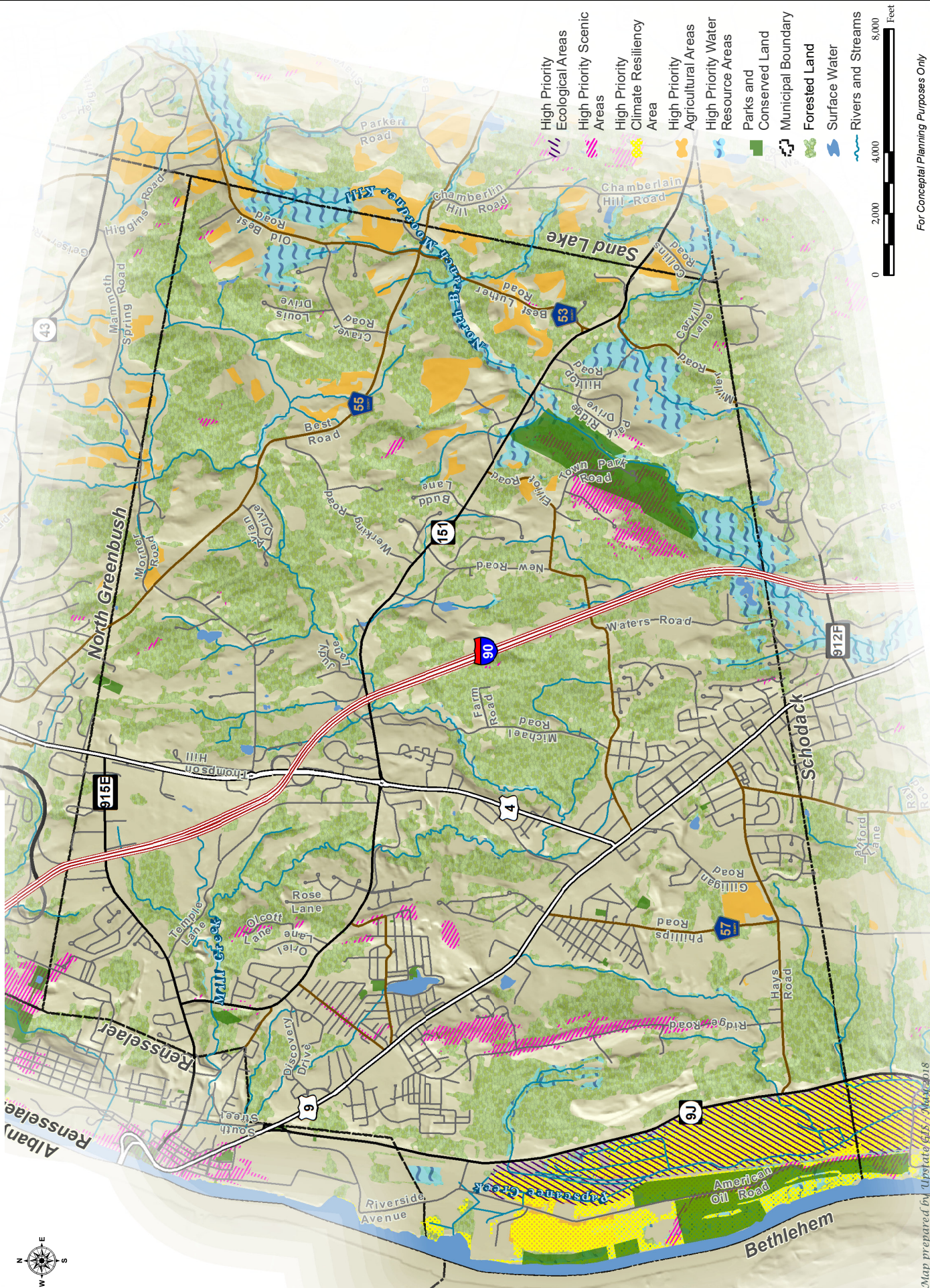
Appendix I:

Town of East Greenbush Resource Targets and Conservation Priority Areas

East Greenbush has two areas that scored high for more than one resource target. The tidal wetlands and floodplains along the Hudson River and Papscanee Creek are high priority for water resources, agricultural areas, ecological resources (uncommon habitats, plants, and animals), and climate resiliency (this area will allow the migration of tidal wetlands as river level rises). The corridor of the Moordener Kill North Branch has high priority water resources, and flows through East Greenbush Town Park, the largest public land and the center of high priority scenic areas. Other high priority water resources are along Mill Creek and west of Miller Road, and other high priority agricultural resources are in the eastern part of the town. Of lower priority on a county-wide scale but significant for East Greenbush are the large areas of forested lands in the area of Best Road and Best-Luther Road (particularly north of Best Road) and the wetlands near Best Road which help protect water quality of streams and provide wildlife habitat. Areas of uncommon plants are found near Mannix Road and along Red Mill Creek.

Resource Target	Conservation Priority Area
Water	Areas between Rte 9J and Hudson River along Papscanee Creek
Water	North branch of Moordener Kill corridor along Old Best Road and between Luther Road and Rte 20
Water	Mill Creek between Rte 4 and I-90
Water	Wetlands west of Miller Road
Water	Wellheads in Hampton Manor
Water	Between Ridge Road and Rte 9J
Ecological	Hudson River shoreline and tidal areas
Climate Resiliency	Hudson River tidal flats and floodplains, and along Papscanee Creek
Agricultural	Areas between Rte 9J and Hudson River along Papscanee Creek (potential climate change inundation)
Scenic	East Greenbush Town Park and vicinity
Scenic	Ridge Road
Composite	Hudson River tidal flats and floodplains, and along Papscanee Creek
Composite	North branch of Moordener Kill corridor

Conservation Plan for Rensselaer County Highest Priority Areas - Town of East Greenbush



For Conceptual Planning Purposes Only

Map prepared by UpdateGIS, Inc.