



Rensselaer Land Trust  
415 River Street  
Troy NY 12180

Nonprofit Organization  
US Postage Paid  
Albany NY  
Permit No 403

RETURN SERVICE REQUESTED

[www.renstrust.org](http://www.renstrust.org)  
(518) 659-5263

The Rensselaer Land Trust (RLT) is a 501(c)(3) nonprofit organization dedicated to the preservation of natural spaces throughout Rensselaer County, New York, especially land that protects sources of drinking water, provides natural habitat for wildlife and maintains the scenic rural character of the community. Founded in 1987, we have protected 792 acres, owning 6 preserves with 235 acres and holding conservation easements on 12 properties with 557 acres. Your donations are our primary funding source.



Printed on recycled paper

**Reduce waste and bring on a new member—pass this newsletter along!**

# Calendar Get updates at [www.renstrust.org](http://www.renstrust.org)

## 5th Annual Oktoberfest Benefit!

2:00 TO 10:00 P.M. • SATURDAY, OCT. 20, 2012 • \$7 COVER

Brown's Brewing Company, Revolution Hall, 417 River Street, Troy.

Music! Beer! Celebrate clean water for clean beer! Join us for the 5th Annual Oktoberfest Benefit for the Rensselaer Land Trust. Music by Flood Road Bluegrass, The Stray Dogs, and Fritz's Polka Band.

## Annual Meeting

9:00 A.M. TO NOON • SATURDAY, DEC. 1, 2012 • \$15 INCLUDES BREAKFAST BUFFET

Brown's Brewing Company, Revolution Hall, 417 River Street, Troy.

Key Note speaker: John Cronin, Hudson Riverkeeper from 1983-2000, Founding Director and former Chief Executive Officer of the Beacon Institute, Senior Fellow in Environmental Affairs at the

Pace Academy for Applied Environmental Studies at Pace University, first Beacon Institute Fellow at Clarkson University. Cronin co-authored *The Riverkeepers*, with Robert F. Kennedy, Jr. He has been named a Hero for the Planet by *Time Magazine*, and has received, among numerous other awards, a national Jefferson Award, known as the "Nobel Prize for public service."

Reservations required. Contact [renstrust@renstrust.org](mailto:renstrust@renstrust.org) or call 659-5263.

## Free Concert, Victorian Stroll and RLT Open House

2:00 P.M. TO 4:00 P.M. • SUNDAY, DEC. 2, 2012

RLT Office, 415 River Street, Troy

Fiddler George Wilson is a multi-instrumental virtuoso playing traditional and folk styles. He has mastered over 500 upbeat tunes from New England, Quebec, Cape Breton, Scotland, Ireland and Shetland.



Join us on Facebook at [www.facebook.com/RensselaerLandTrust](http://www.facebook.com/RensselaerLandTrust)

For monthly e-news with updates, send e-mail address to [christine@renstrust.org](mailto:christine@renstrust.org)



# RLT News

FALL 2012

Celebrating 25 Years of Conserving Land in Rensselaer County

## 25 years of RLT and 25 ways you can support us!

We need you to make an RLT Resolution! Take a moment to look at the list below to see 25 different ways you can help RLT continue to conserve land and protect resources in Rensselaer County.

1. Donate land.
2. Donate a conservation easement.
3. Make a cash donation.
4. Volunteer at events.
5. Join a committee.
6. Lead an outing.
7. Serve as a director.
8. Leave something to RLT in your will.
9. Donate stock.
10. Set up a charitable remainder trust.
11. Donate a raffle item.
12. Sponsor an event.
13. Ask your friends and family members to join RLT.
14. Donate bonds.
15. Participate in one of our work days.
16. Donate office supplies/equipment.
17. Donate stamps.
18. Help stuff envelopes for mailings.
19. Offer to host an event.
20. Talk to your employer about matching your charitable gift to us.
21. Volunteer your expertise.
22. Organize an event.
23. Manage a project.
24. Provide decorations for Oktoberfest and other events.
25. Help us with a fundraising drive.

## Interactive Watershed Map of Rensselaer County Coming to the RLT Website

**Do you know where your water comes from? Do you know where it goes after you've used it?**

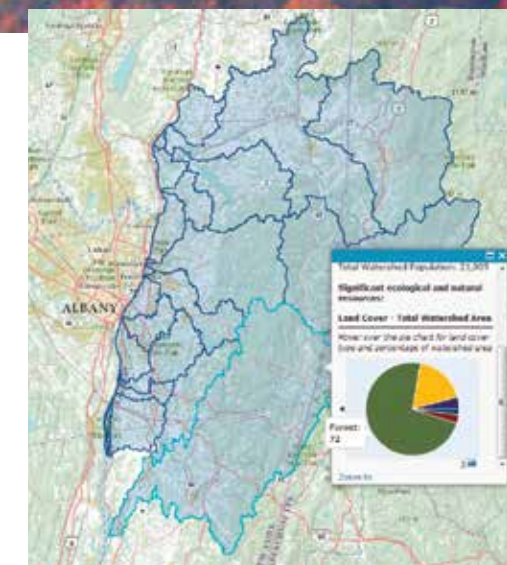
Water is one of the most precious natural resources protected by the Rensselaer Land Trust's land conservation work. To help Rensselaer County residents become more aware of their water resources, RLT

By Nick Conrad, President

is creating an online map of the County's

watersheds. Clicking anywhere on the map will open a window with the name, population, acreage, land use, and significant features of the watershed at that location. The map will also display municipal water districts with the number of residents served and the water source; and it will display lakes, ponds, and rivers open for boating, paddling, and fishing. This new map will expand RLT's current watershed awareness activities, such as its annual shoreline clean-up of the Tomhannock Reservoir, water source for more than 100,000 people.

This project is being funded by a \$5,000 grant from the Royal Bank of Canada's Blue Water Project™. The RBC Blue Water Project™ is a wide-ranging, multi-year program to help foster sustainable water stewardship around the world. Since 2007, RBC has committed more than \$34 million in single and multi-year grants to 300 organizations.



Chosen as a grant recipient for its shared commitment to protect watersheds, RLT envisions the interactive map as a way to help anyone with internet access learn more about their local natural resources and the services a healthy environment provides. The website will also include steps residents can take in their daily lives to conserve water and keep it clean. As youth are more and more disconnected from the natural world, the map can be used by school classes as a teaching tool.

We hope to have this new educational resource available to residents and schools later this fall. Our thanks go to Jim Watkinson, of RBC Wealth Management's Albany office, and to Rick Lederer-Barnes, our mapping consultant. Find out more about the Blue Water Project™ at [www.rbc.com/bluewater](http://www.rbc.com/bluewater).

# Land and Watershed Protection

**BOARD OF DIRECTORS**

Nick Conrad, President  
William Niemi, Vice President  
Garrett Brown, Treasurer  
Stacey Goldstein, Secretary  
Carl Cipperly  
Robert Crowley  
Joseph Durkin  
Francille Egbert  
Jennifer Hixon  
Sally Lawrence  
Allan Stern

**EXECUTIVE DIRECTOR**

Christine Young, Esq.

**VOLUNTEER COORDINATOR**

Paul Schroeder

**RLT NEWS IS PUBLISHED TWICE A YEAR.**

Christine Young, Editor  
Brian Murray, Designer  
Special thanks to Nate Simms for photographs on cover and inside pages.

Join us on Facebook at [www.facebook.com/RensselaerLandTrust](http://www.facebook.com/RensselaerLandTrust)

Join us on Meetup at [www.meetup.com/Rensselaer-Land-Trust](http://www.meetup.com/Rensselaer-Land-Trust)

If you are not receiving our monthly E-News, send your e-mail address to [christine@renstrust.org](mailto:christine@renstrust.org)



[www.renstrust.org](http://www.renstrust.org)  
(518) 659-5263

This summer, RLT partnered with the Rensselaer Plateau Alliance, Agricultural Stewardship Association, and the New York Forest Owners Association to form the Working Forest Initiative for the Rensselaer Plateau. This partnership's first project is writing a grant for federal funding of forestland conservation on the Plateau. The Rensselaer Plateau Alliance and the New York State Department of Environmental Conservation are taking the lead on this project. RLT's involvement to date has primarily been with landowner outreach, support, brainstorming and research. This project is a work in progress and it will take months before we know whether the grant application is successful and then years for the funds to be distributed and the project concluded.

**By Christine Young, Executive Director**

Why protect the Plateau? The Rensselaer Plateau is the fifth largest unfragmented forested area in New York State. It is located between Grafton, Sand Lake, Stephentown and Berlin, an area approximately

109,000 acres in size, about one quarter of the county. It rises up from the surrounding lower elevations, is often 8-10 degrees cooler than Troy, and is important for biodiversity, wildlife habitat and corridors, watershed protection, and the continuing economic viability of the local towns. The Rensselaer Plateau is also one of RLT's focus areas.

This working forest initiative is complicated in that it involves thousands of acres, numerous land owners, many partners, and years for completion. But we all share the same vision: keep the Plateau's forests as working forest for future generations, providing economic, ecological, wildlife, recreational and scenic benefits. Healthy forests benefit everyone. By collaborating with other like-minded organizations, resources and capacity go further, more conservation can be accomplished, our mission of land conservation is supported and strengthened, and the pace of conservation is increased. This is a rewarding land conservation project and RLT is thrilled to be a part of it.



▶ RLT Acquisitions Team

◀ Mushroom hunters

▶▶ Hydroelectric plant tour



▶▶ Hoosic River paddle under the Buskirk covered bridge.

▶ Volunteers at the Hoosic River tree planting.

▼ Historic cemetery restoration and clean up.



**Winner of the RLT poetry contest!**

## On Silvernail Farm

(Evening, past sunset, moon rising)

How beautiful the mountains!  
The light, shadows soften  
In the trees, purple gray cast  
To the clouds. Lawn and fields,  
Flowers and gardens, barn and  
Tractor, it's a lovely place to be.

How I longed for this many  
Years ago: a clear sky  
Gusts of wind taking up limbs  
Of trees tossing, bouncing  
Leaves awry dropping them, still,  
Quiet, in twilight now small birds sing.

How the night comes on, holds me  
Soft. Wind sounds soothe my soul  
Stroke my skin, can I begin  
Again? Feel the embrace  
Of time and place and being  
Still, and bring my heart what it wants  
most.

"Peggy" Margaret J. Zamierowski



**RLT WISH LIST**

Raffle items needed for Oktoberfest fundraising event

Postage stamps  
Office supplies/equipment  
Small microwave

Low cabinet for storage  
Projector

**CALL FOR VOLUNTEERS**

We're looking for special people who have a passion for the outdoors to lead outings, help organize special events, build trails, and organize a Rensselaer County bike ride. If you or anyone you know would like to volunteer with RLT, email [christine@renstrust.org](mailto:christine@renstrust.org) today!